

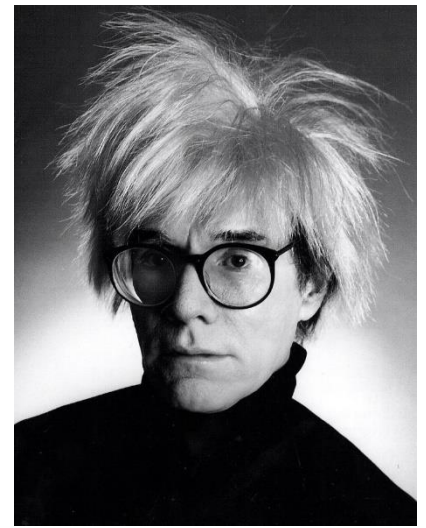
Art

This is **Andy Warhol**.

He was a famous **artist**.

His style of art was called '**Pop Art**'.

Pop Art was **different to fine art** because it included pictures of **famous people and adverts**.



Here is some of his art. Do you recognise some of the things in the pictures?

1. Label or list what you recognise.
2. Label or list what you notice about the colours.





Andy Warhol liked to paint pictures of bottles, cans and packets.

Can you draw s some bottles, cans and packets from your fridge or cupboard at home?

